

Clinical Updates

Leukemia vs Lymphoma

Raquel Walsh Jahnke, DO, MBA

Speakers, planners and CME staff do not have any relevant financial relationships with ineligible companies to disclose

Objective:

At the conclusion of this presentation, participants should be able to:

- 1) Have a basic understanding of the differences between Leukemia and Lymphoma.

For CME Credit:

Watch this recording and complete the online evaluation/attestation via the QR Code found at the end of this slide deck. Evaluation must be completed within 30 days of podcast launch.

CentraCare is accredited by the Minnesota Medical Association to provide continuing medical education for physicians.

CentraCare designates this enduring material for a maximum of .25 *AMA PRA Category 1 Credit™*. Physicians should claim only the credit commensurate with the extent of their participation in the activity.

Successful completion of this CME activity which includes participation in the evaluation component, enables the learner to earn credit toward the CME requirement(s) of the American Board of Surgery's Continuous Certification program. It is the CME activity provider's responsibility to submit learner completion information to ACCME for the purpose of granting ABS credit.

Please contact the Medical Staff Development Office if you have any special mobility, vision, hearing or other needs.

LEUKEMIA VS LYMPHOMA

Clinical Updates Podcast: Classification differences

Raquel Walsh Jahnke, D.O. MBA with Lucio Minces, M.D.

05/23/2024

Basic Understanding

LEUKEMIA

Blood and marrow

Not emergent - SLOW

Chronic

Acute

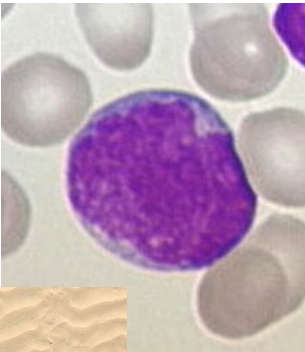
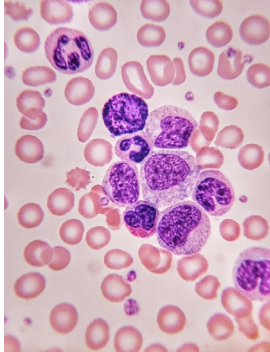
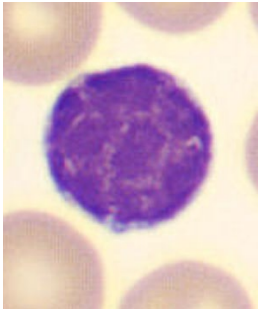
Emergency - RAPID

Chronic lymphocytic leukemia

Chronic myeloid leukemia

Acute myeloid leukemia

Acute lymphocytic leukemia



LYMPHOMA

Lymph nodes

Hodgkin

Non-Hodgkin

"Owls eye"



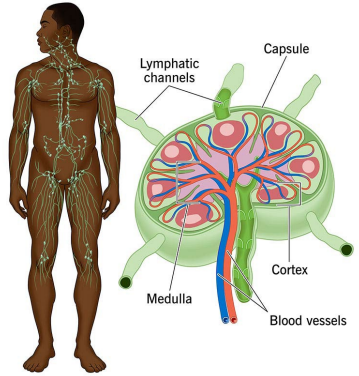
Normal lymphocyte

Reed-Sternberg Cell

- Large Cell
- Follicular
- Burkitt
- Mantle cell
- Marginal Zone
- LPL
- Other: T cell



Lymph node



Lymphatic system

LEUKEMIA

Signs & Symptoms



Petechiae or small red spots on the skin



Bones become tender especially the sternum



Anemia



Night sweats



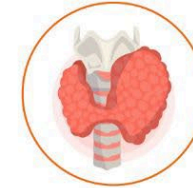
Bleeding tendency or hemorrhagic tendency



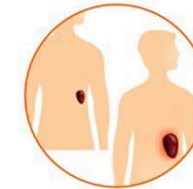
Fatigue and fever



Swollen lymph nodes



Enlarged spleen, kidney and the liver



Pain in joints and bones

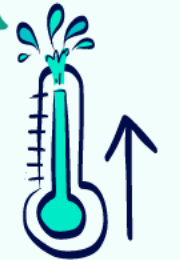


Loss of weight





Coughing



Pain or vomiting when drinking alcohol



SIGNS & SYMPTOMS OF NON-HODGKIN LYMPHOMA

Clues to the Diagnosis

LEUKEMIA

Blood and marrow

Not emergent - SLOW

Chronic

Acute

Emergency - RAPID

Chronic lymphocytic leukemia

Chronic myeloid leukemia

Acute myeloid leukemia

Acute lymphocytic leukemia

Peripheral lymphocyte count >4.0
Older patients >60

WBC count > 30K usually
Middle aged patients 40-60
High neutrophil count
Clue * Basophilia, eosinophilia!**

WBC count either low (<2) or high (>20)
Platelets <50
Hemoglobin <9
PANCYTOPENIA!
Rapidly dropping counts

LYMPHOMA

Lymph nodes

Hodgkin

Non-Hodgkin

Younger patients 20-40
Progressing lymphadenopathy

Middle to older age 50+
Progressing lymphadenopathy

Diagnostic tests

LEUKEMIA

Blood and marrow

Not emergent - SLOW

Chronic

Acute

Emergency - RAPID

Chronic lymphocytic leukemia

Chronic myeloid leukemia

Acute myeloid leukemia

Acute lymphocytic leukemia

FLOW CYTOMETRY OF BLOOD

BCR/ABL OF THE BLOOD
Flow is NOT helpful here!

FLOW CYTOMETRY
URGENT BONE MARROW BIOPSY
MAY NEED CHEMO EMERGENTLY

LYMPHOMA

Lymph nodes

Hodgkin

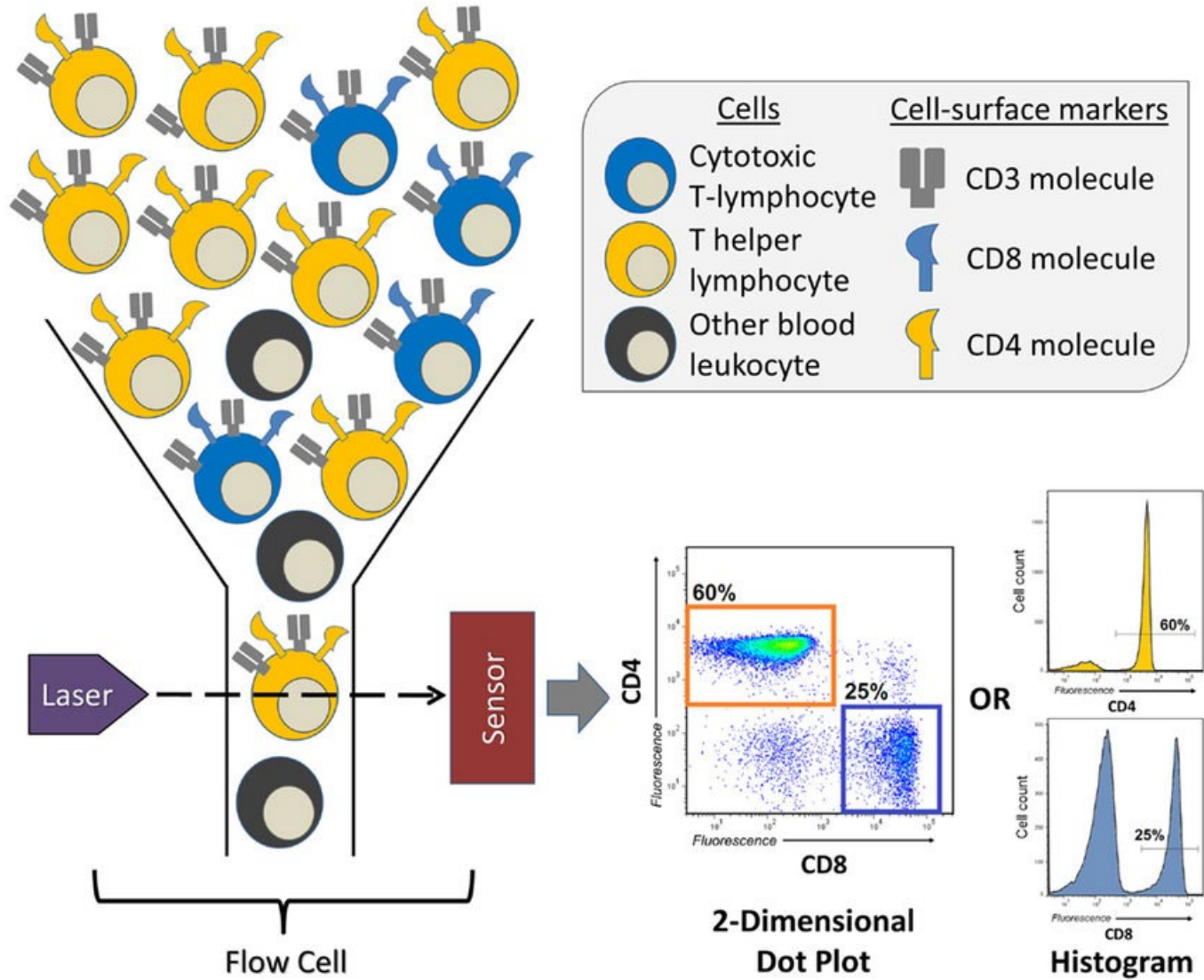
Non-Hodgkin

Lymph node biopsy
Flow NOT helpful

Lymph node biopsy
Send FRESH for flow cytometry

Flow cytometry Limitations:

- Neutrophils
- MDS
- Myeloproliferative tumors
- Monocytic neoplasms
- Hodgkin disease
- Metastatic carcinoma or melanoma



To claim CME credit (must complete within 30 days of podcast launch)



- Scan QR Code or click on the link below-
 - iPhone: use camera to take you to the site
 - QR Code Reader App
 - Snap Chat (take a snap!)
 - Facebook (“Explore” – QR Code)
- <https://survey.alchemer.com/s3/7645302/CME-Clinical-Updates-ENDURING-MATERIAL>
- Contact carla.griffin@centracare.com with questions or for a CME transcript.